



# INDOFINE Chemical Company, Inc.

121 Stryker Lane, Bldg. 30, Suite 1 • Hillsborough, NJ 08844 • U.S.A.

Phone: (908) 359-6778 • FAX: (908) 359-1179

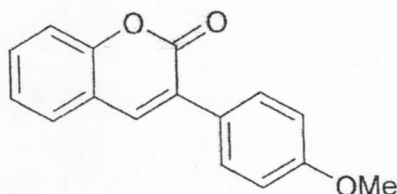
website: [www.indofinechemical.com](http://www.indofinechemical.com)

e-mail: [chemical@indofinechemical.com](mailto:chemical@indofinechemical.com)

## CERTIFICATE OF ANALYSIS

CAT. No.: 19-046

<u>Product Name:</u>	<b>3(4'-METHOXYPHENYL)COUMARIN</b>
<u>Lot Number:</u>	98117
<u>CAS No.:</u>	[23000-33-1]
<u>Chemical Formula:</u>	C <sub>16</sub> H <sub>12</sub> O <sub>3</sub>
<u>Molecular Weight:</u>	252.27
<u>Melting Point:</u>	142-144°C
<u>Appearance:</u>	White crystalline powder
<u>Solubility:</u>	Soluble in Chloroform
<u>T.L.C.:</u>	Hexane:Ethyl acetate (7:3)
<u>Purity(HPLC):</u>	99.74%





# INDOFINE Chemical Company, Inc.

121 Stryker Lane, Bldg. 30, Suite 1 • Hillsborough, NJ 08844 • U.S.A.

Phone: (908) 359-6778 • FAX: (908) 359-1179

website: [www.indofinechemical.com](http://www.indofinechemical.com)

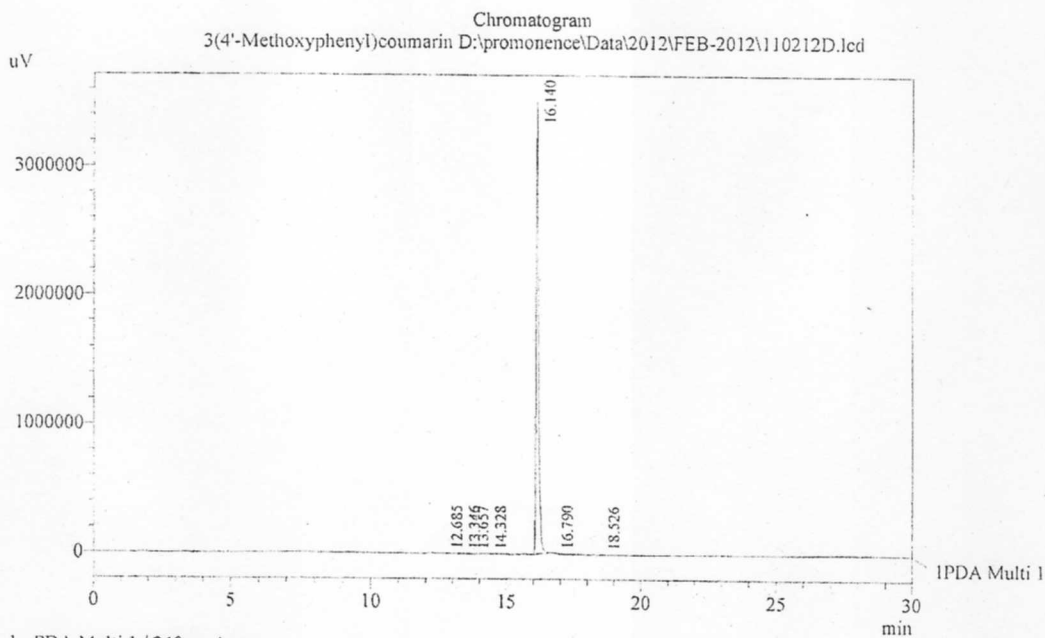
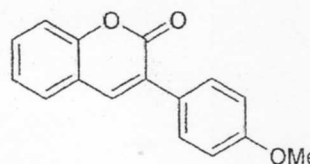
e-mail: [chemical@indofinechemical.com](mailto:chemical@indofinechemical.com)

## HPLC ANALYSIS

Acquired by : Sanjeev  
Sample Name : 3(4'-Methoxyphenyl)coumarin  
Sample ID : Lot No:-98117  
Injection Volume : 20 uL  
Data Filename : I10212D.lcd  
Method Filename : Linear Gradient.M.lcm

Catalog No.: 19-046  
Product name: 3(4'-Methoxyphenyl)coumarin  
Lot No.: 98117

Date Acquired : 2/11/2012 2:26:51 PM  
Data Processed : 2/11/2012 3:16:56 PM  
Column : LUNA C-18(2), (250mm x4.6mm 5.0µ)  
Flow : 1.000 mL/min.  
Mobile Phase : A(0.05% TFA in water) B(Acetonitrile)  
0.01 90 10  
12.0 10 90  
20.0 10 90  
25.0 90 10  
30.0 90 10



1 PDA Multi 1 / 240nm 4nm

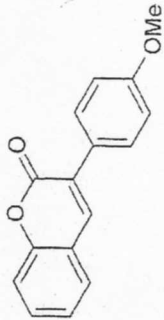
PeakTable

Peak#	Name	Ret. Time	Area	Area %	Relative Retention Time
1	RT:12.685	12.685	6829	0.03	0.79
2	RT:13.346	13.346	8041	0.04	0.83
3	RT:13.657	13.657	3248	0.02	0.85
4	RT:14.328	14.328	4217	0.02	0.89
5	RT:16.140	16.140	21289541	99.74	1.00
6	RT:16.790	16.790	9145	0.04	1.04
7	RT:18.526	18.526	23121	0.11	1.15
Total			21344142	100.00	



INDOFINE Chemical Company, Inc.  
121 STRYKER LANE  
BLDG. 30, SUITE 1  
HILLSBOROUGH, NJ 08844

Catalog No.: 19-046  
Product name: 3(4'-Methoxyphenyl)coumarin  
Lot No.: 98117

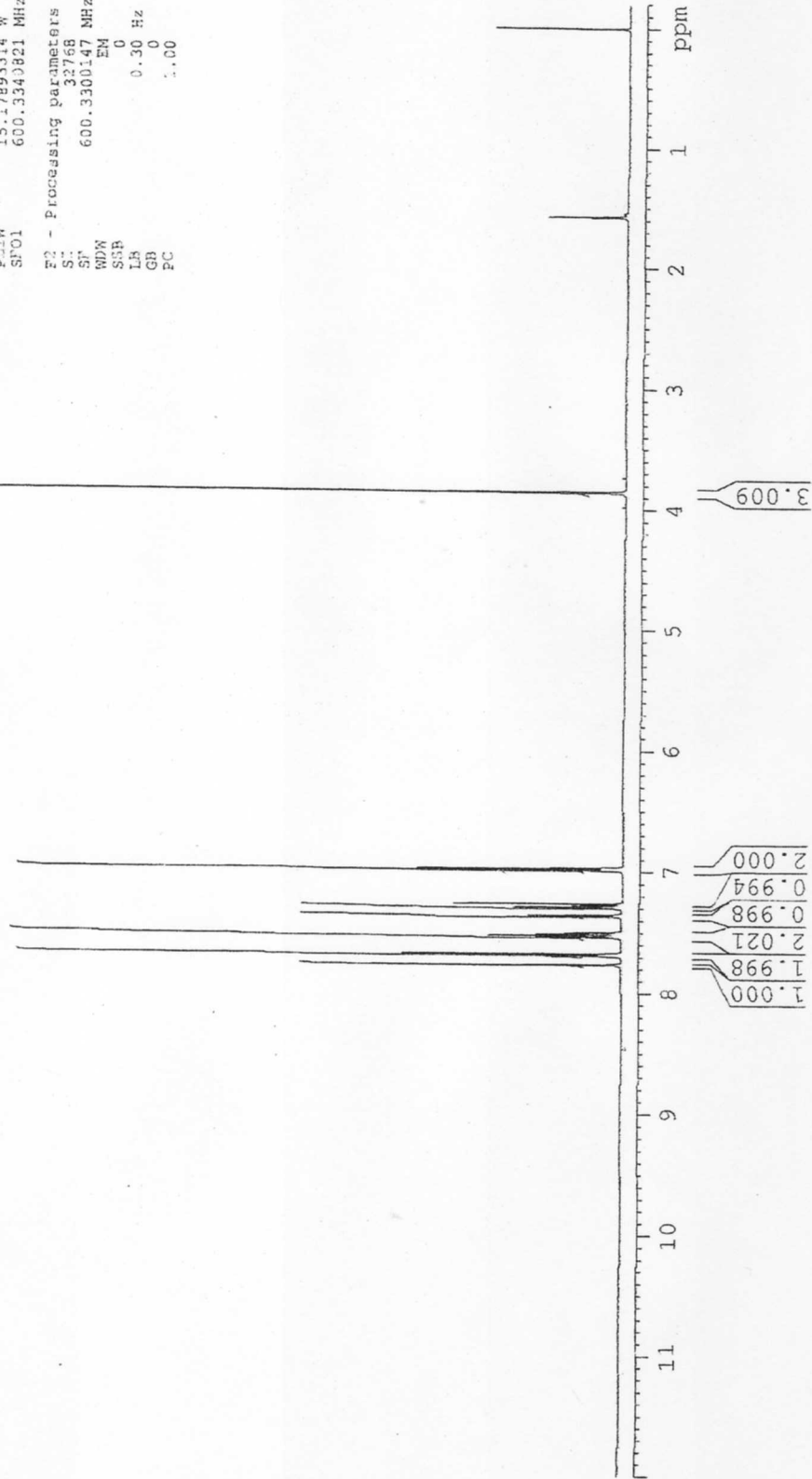


ICC-02  
1H IN CDCL3  
AVANCE-600  
28-2-12

SOLVENT CDCL3  
NS 16  
DS 0  
SUN 11029.412 Hz  
FIDRES 0.383381 Hz  
AQ 1.3076447 sec  
RG 1.820  
DH 45.333 usec  
DE 6.00 usec  
TE 298.2 K  
D1 1.50000000 sec  
TD0 1

\*\*\*\*\* CHANNEL f1 \*\*\*\*\*  
NUC1 1H  
P1 9.30 usec  
PL1 -1.00 dB  
PLW 15.17893314 W  
SFO1 600.3343821 MHz

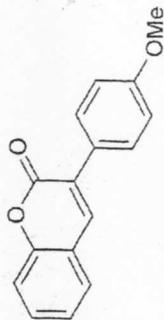
F2 - Processing parameters  
SI 32768  
SF 600.3300147 MHz  
WDW EM  
SSB 0  
LB 0.30 Hz  
GB 0  
PC 1.00





INDOFINE Chemical Company, Inc.  
121 STRYKER LANE  
BLDG. 30, SUITE 1  
HILLSBOROUGH, NJ 08844

Catalog No.: 19-046  
Product name: 3(4'-Methoxyphenyl)coumarin  
Lot No.: 98117



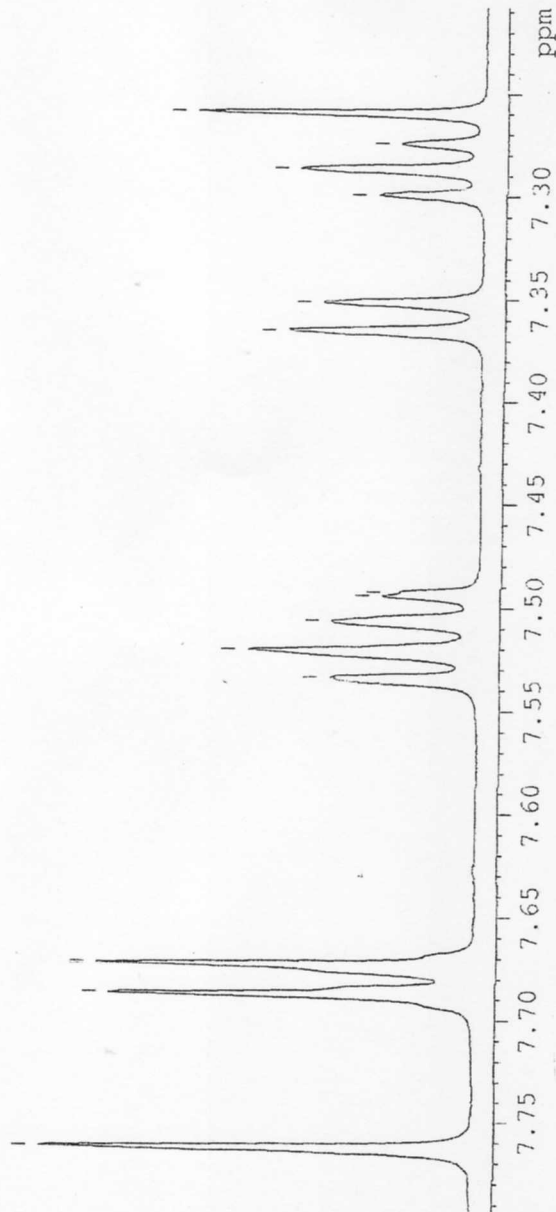
ICC-02  
1H IN CDCl3  
AVANCE-600  
28-2-12

SOLVENT CDCl3  
NS 16  
DS 0  
SMH 11029.412 Hz  
F1DRES 0.383381 Hz  
AQ 1.3075447 sec  
RG 1.820  
DM 45.333 usec  
DE 5.00 usec  
TE 298.2 K  
D 1.5000000 sec  
TD0 1

===== CHANNEL f1 =====  
NUC1 1H  
P 3.30 usec  
PL1 -1.00 dB  
PL1W 15.17894314 W  
SFO1 600.3340821 MHz

F2 - Processing parameters  
SI 32768  
SF 600.3300147 MHz  
WDW EM  
SSB 0  
LB 0  
GB 0  
PC 1.00

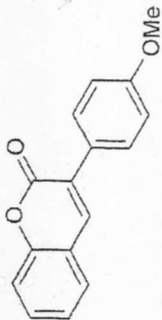
7.763  
7.688  
7.674  
7.535  
7.521  
7.507  
7.495  
7.493  
7.366  
7.352  
7.300  
7.287  
7.275  
7.260





INDOFINE Chemical Company, Inc.  
121 STRYKER LANE  
BLDG. 30, SUITE 1  
HILLSBOROUGH, NJ 08844

Catalog No.: 19-046  
Product name: 3-(4'-Methoxyphenyl)coumarin  
Lot No.: 98117



ICC-02  
1H IN CDCL3  
AVANCE-600  
28-2-12

SOLVENT CDCL3  
NS 16  
D3 0  
SWH 11029.412 Hz  
FIDRES 0.38381 Hz  
AQ 1.3075447 sec  
RG 1820  
DW 45.333 usec  
DE 6.00 usec  
TE 298.2 K  
D1 1.50000000 sec  
TD0 1

\*\*\*\*\* CHANNEL f1 \*\*\*\*\*  
NUC1 1H  
P1 9.30 usec  
PL1 -1.00 dB  
PL1W 15.1789314 W  
SFO1 600.3340821 MHz

F2 - Processing parameters  
SI 32768  
SF 600.3301147 MHz  
WDW EM  
SSB 0  
LB 0  
GB 0  
PC 1.00

